



FMCT3 OIL CATCH CAN FITTING INSTRUCTIONS



Please thoroughly read through and familiarise yourself with these instructions in their entirety prior to beginning any part of the installation process of any component. Please also ensure the vehicle and engine has cooled down sufficiently to avoid risking possible skin burns or other injury.

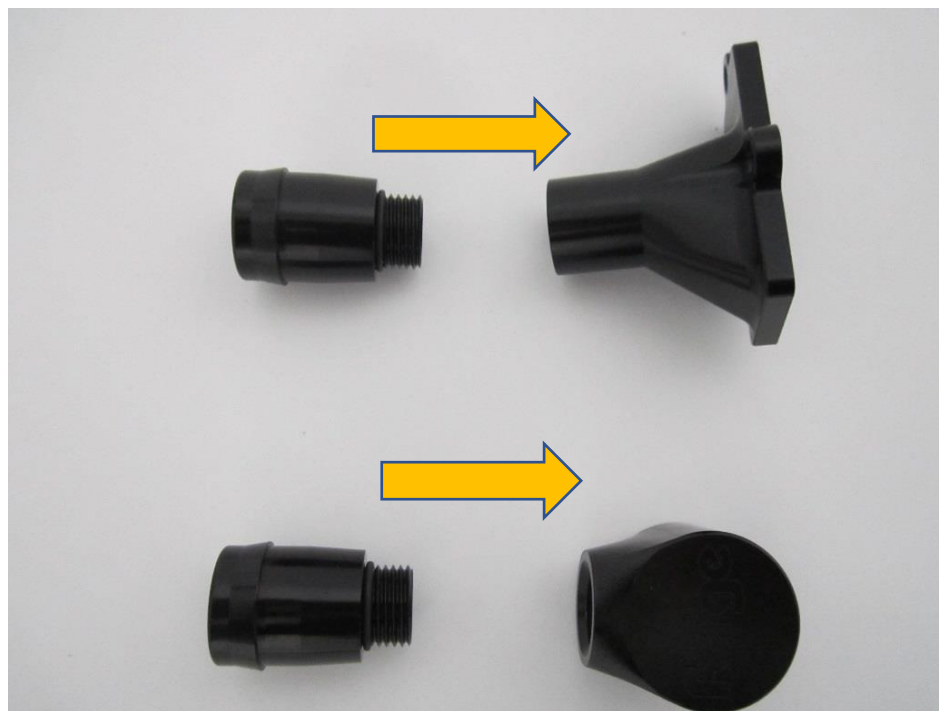
TOOLS NEEDED:

- 10mm & 13mm socket and ratchet
- 4mm & 5mm Allen key
- Flat blade Screw driver or lever tool
- Heat gun or hair dryer

1. First thing you will need to do is prep some parts of the catch can kit ready for installation. To start, slide the O ring over the threaded part of the Norma adaptor as shown in the picture.



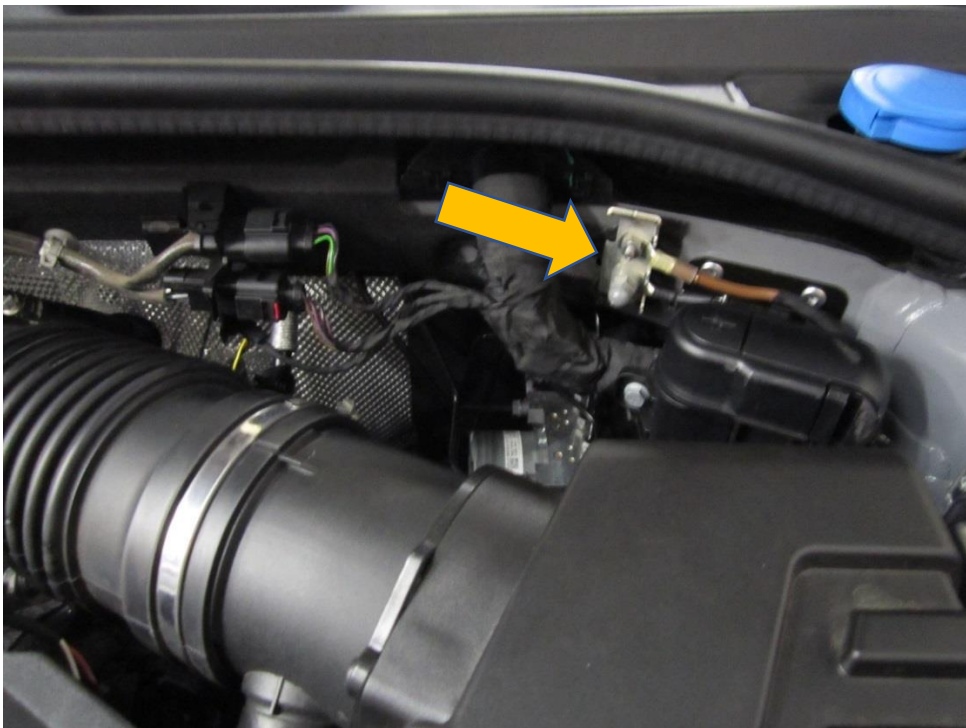
2. Now screw together the Norma adaptor to the two oil breather adaptors.



3. Place the rubber seal into the oil breather adaptor, this is a push fit.



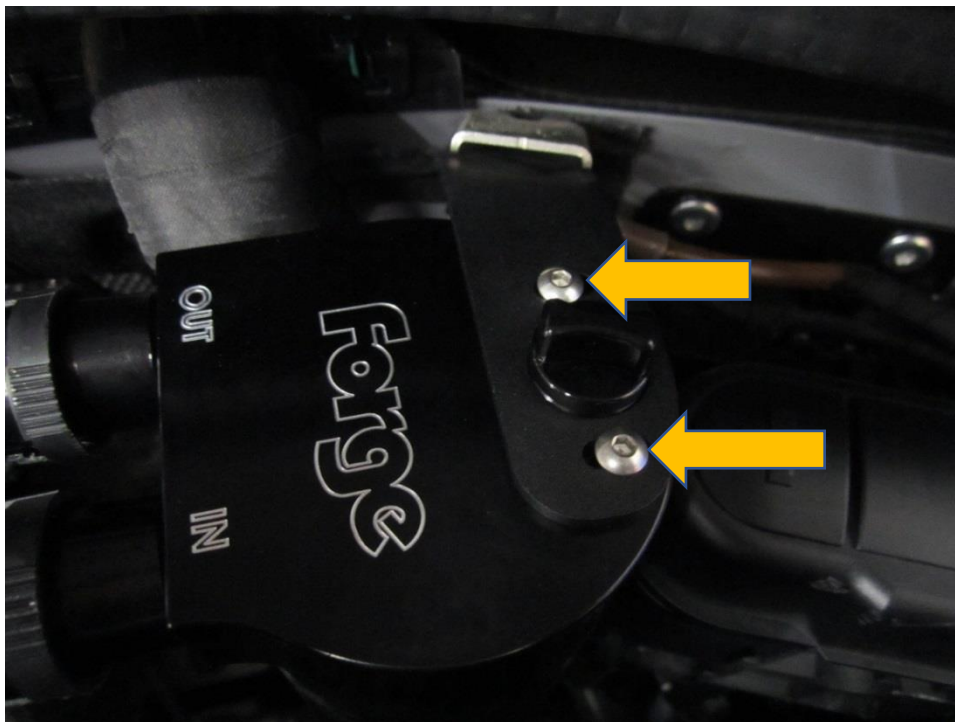
4. Using a ratchet, undo the 10mm & 13mm nuts that hold the earthing bracket as this is where you are going to mount the catch can bracket. Once the two nuts are removed, move the two earth cables away from the screw poles.



5. Now place the catch can bracket over the screw poles in front of the earth bracket and slide the cables back into place then tighten up the 10mm & 13mm nuts.



6. Attach the catch can to the bracket by mounting the catch can underneath the bracket and screw into place using the 4mm cap head screws provided. There is adjustment in the bracket to allow you to change the angle of the catch can.



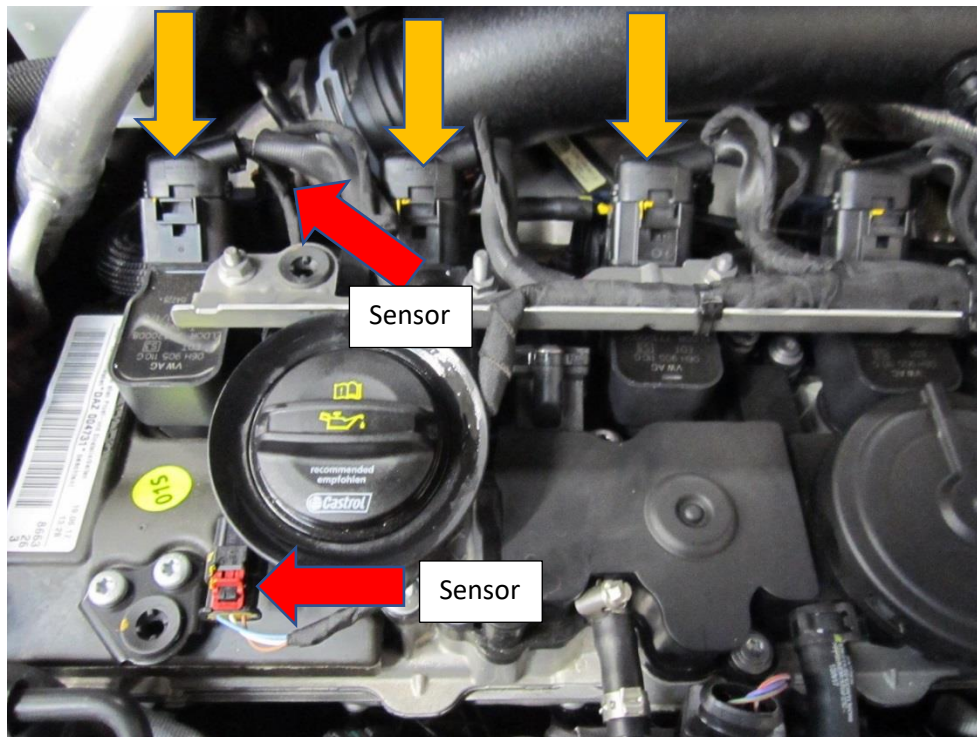
7. Remove the engine cover, this is held down with rubber grommets. To remove it just pull the cover upwards firmly but smoothly.



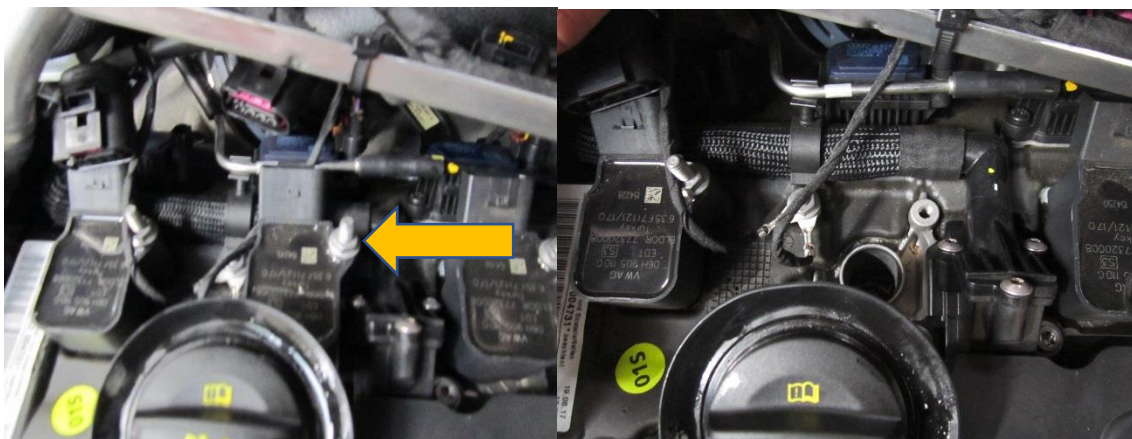
8. Undo the three 10mm nuts that hold the wiring loom rail to the rocker cover. These screws are located where the arrows are in the picture.



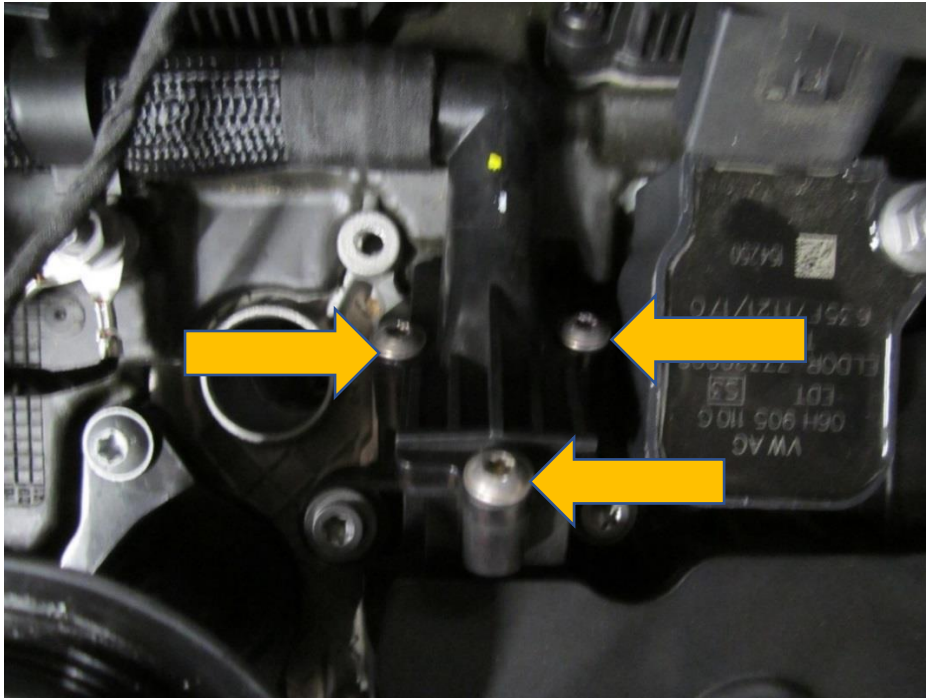
9. Unplug the three coil packs in the picture and the two sensors



10. First locate the second coil pack from the left of the engine when standing in front of the car. Now move the loom rail to gain access to the coil pack retaining nut. Using a 10mm ratchet/spanner undo this nut and remove it from the coil pack. The coil pack should now lift out - you may need to use a flat blade screw driver or trim tool to help persuade it out.



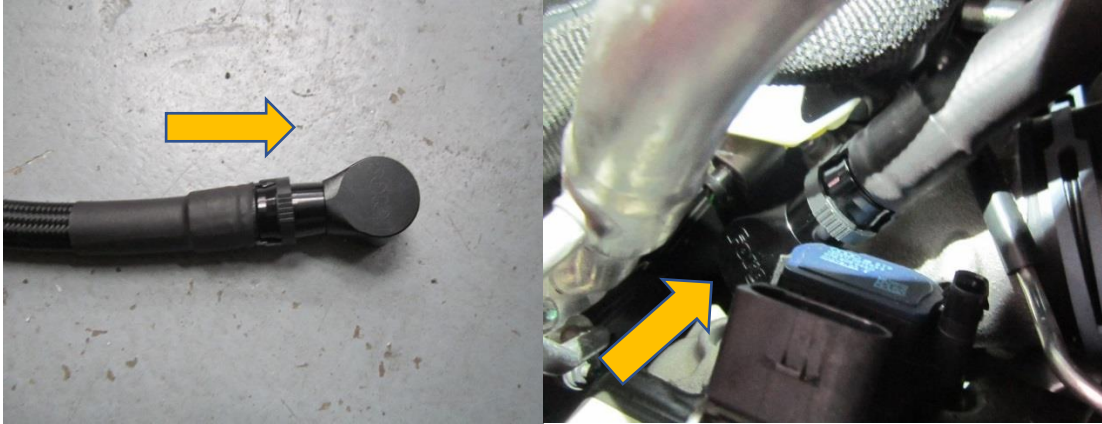
11. With the coil pack removed you can access all three T20 torx screws that hold the oil breather to the rocker cover. Undo these screws and remove that end of the breather hose.



12. At the other end of the breather hose, peel back the cloth tape to reveal the white plastic band. With the use of a heat gun or hair dryer heat up this end of the hose. 30-60 seconds should be enough, don't spend too long with the heat as not wanting to melt the hose. Once warm enough the hose should slide off the turbo elbow. The heat will make removing this hose much easier.



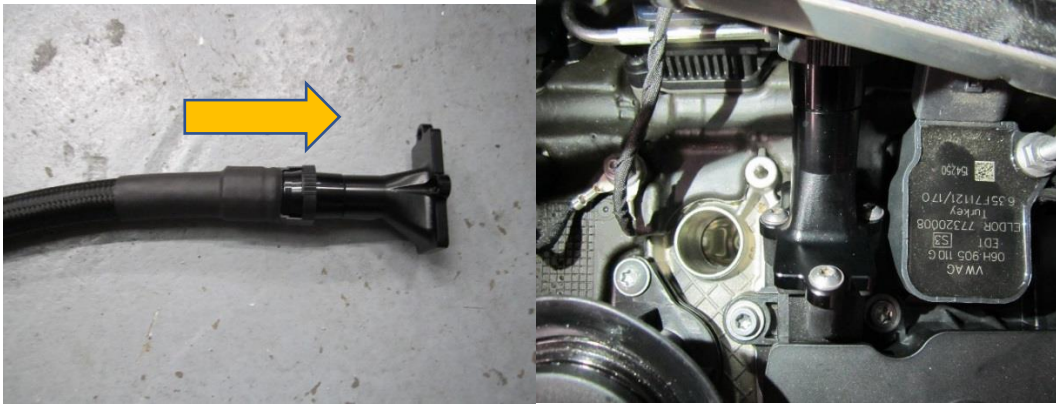
13. Using the longer hose from the catch can kit push fit the rounded end breather pipe adaptor. You will hear a click which tells you it is located properly. This will now push fit onto the turbo elbow.



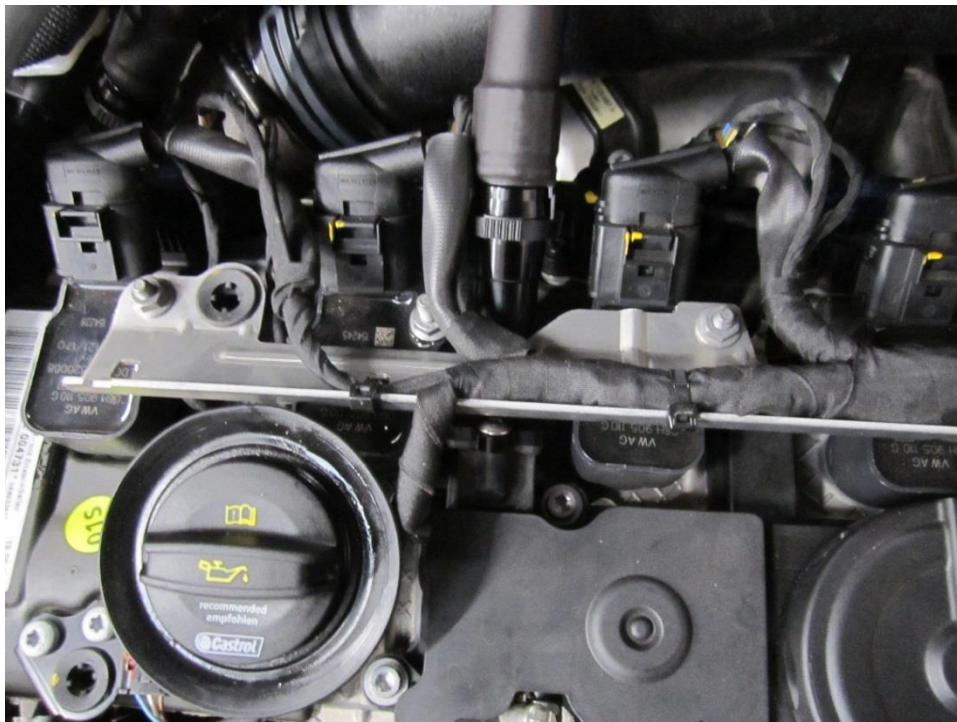
14. With the other end of this breather hose, connect it to the OUT-put of the catch can.



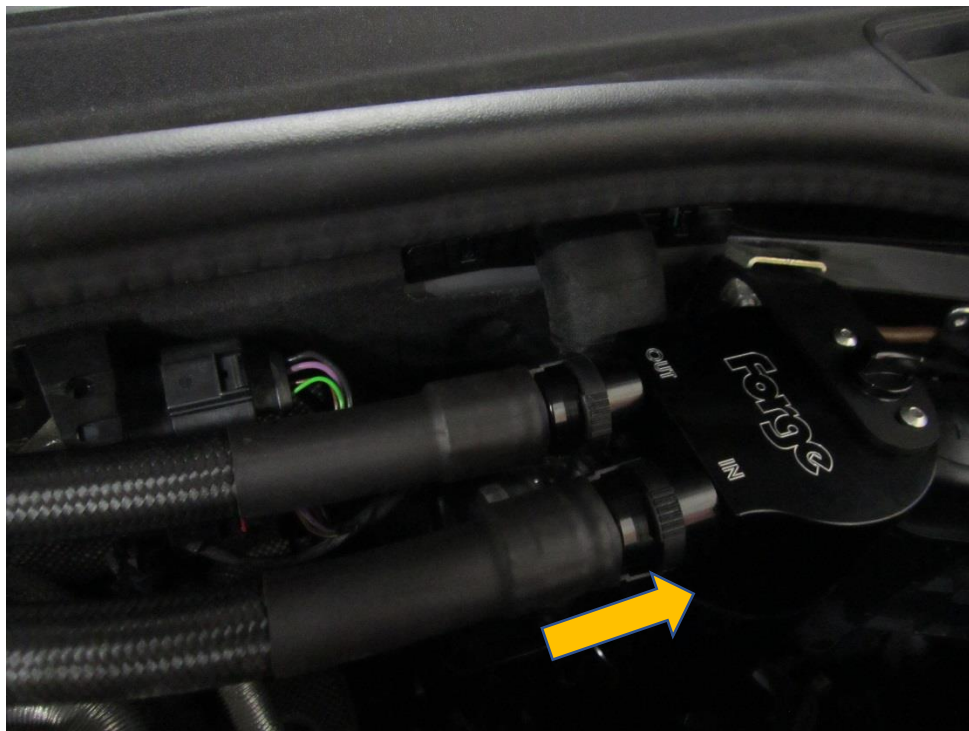
15. Using the remaining shorter hose from the catch can kit push fit the rectangular oil breather adaptor remember to push till it clicks. Now attach it to the rocker cover using the three T20 torxs screws removed earlier.



16. Re fit the coil pack, the three coil pack plugs and the two sensor plugs. The re fit the tree 10mm nuts that hold the wiring loom rail.



17. Connect the 2nd breather hose you have fitted to the IN-put of the catch can. Like before, it's a push fit.



18. Attach the hose clamp to the two hoses where they naturally touch. Tighten the clamp using a 5mm Allen key.



19. The final part is to re attach the engine cover, which push fits into position. Now your installation is complete.

